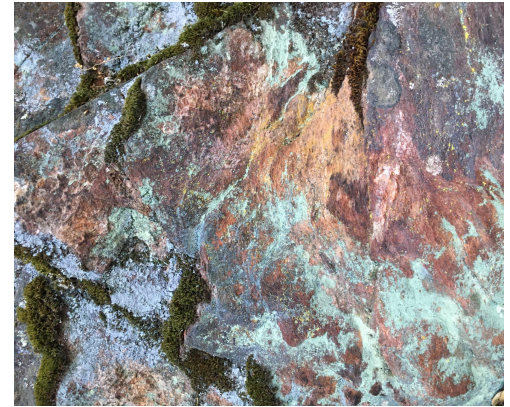


Painting with Nature

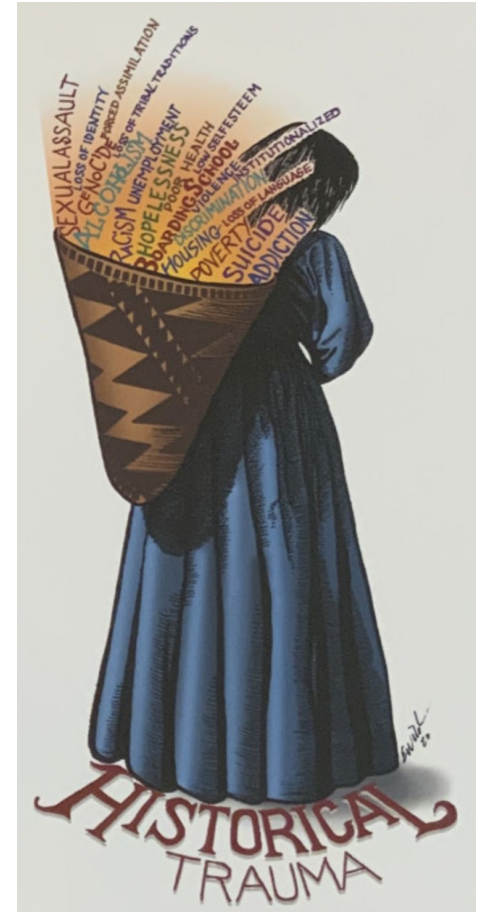
—
Respecting
Indigenous Wisdom
and Working with
Natural Materials



The Survival of Indigenous Wisdom: Understanding California's History

- **~100,000+ years ago: Evidence of human presence** on this side of America
- **1542: Spanish Mission System:** enslavement of Natives to establish a labor force, mass death from illnesses
- **1848: Gold Rush:** legalizing the genocide of California Indians (80% of Native population lost), environmental destruction
- **1890: Boarding School Assimilation:** loss of Indigenous culture, language, and wisdom

[History of the Tuolumne Band of Me-Wuk Indians](#)



Historical Trauma by [Eric Wilder](#)
(Kayasha Band of Pomo Indians)

Loss of Tribal Territories



California Indian Library Collections



The Plains and Sierra Miwok

- **Tuolumne Rancheria-** Tuolumne Band of Me-Wuk Indians, Tuolumne, California
- **Chicken Ranch Rancheria-** Me-Wuk Indians of California, Jamestown, California
- **Buena Vista Rancheria-** Me-Wuk Indians of California, Buena Vista, Amador County
- **Jackson Rancheria-** Jackson Band of Miwok Indians, Jackson, Amador County
- **California Valley Miwok Tribe-** California Valley Miwok Tribe, La Grange, California
- **Shingle Springs Rancheria-** El Dorado County
- **Wilton Rancheria-** Elk Grove, California



Chaw'se

(Indian Grinding Rock State Historic Park, Amador County)



Art as an Act of Resilience



How did Ohlone artists use art as an act of resilience at Mission Dolores (SF)?



Ohlone ceiling mural, Mission Dolores (San Francisco)

The Incredible Basket Weaving of California Natives



How did Native Basket Weaving complicate early (1700s) explorers' perception of Native people?

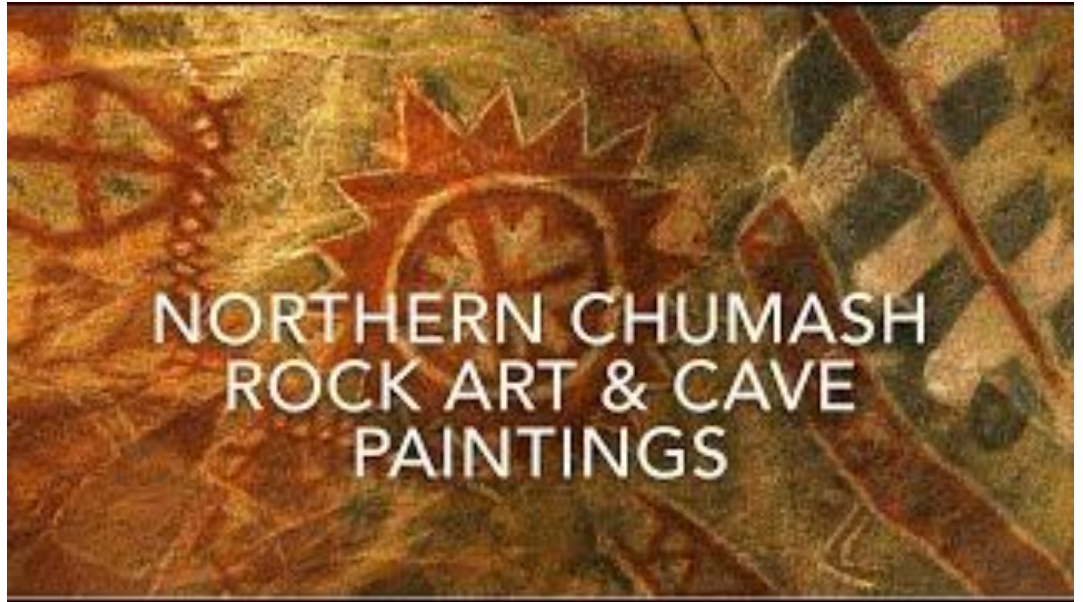


The Teacher by [Kenneth Keys](#)
(Elder, Sherwood Valley Band of Pomo Indians)

Chumash Cave Paintings

—

Santa Barbara,
California



What materials did the Chumash use to create paint?

Honorable Harvest



What are some of the ecological benefits of practicing the Honorable Harvest?

Never Take the First
Ask Permission
Listen for the Answer
Take Only What You Need
Minimize Harm
Use Everything You Take
Share
Be Grateful
Reciprocate the Gift

Excerpt from *Braiding Sweetgrass*
By **Robin Wall Kimmerer** (Potawatomi)

Steps for Making Paint

1. **Harvest** - Foraging earth (rock) and organic (plant) materials
2. **Grind** - Breaking apart and grinding down into powder
3. **Filter** - Filtering/sifting out larger particles and sediment
4. **Liquefy** - Mixing with water, a binder (egg, honey, sap, etc.), or both. Use a glass muller to smooth out fine particles.



Investigating the Origin of Art Materials

Choose a material or tool found in the Art Room to investigate with your group.

Using the internet, search credible sources to complete the table below.

Group Members:

“Where do _____ come from?”
(write art material here)

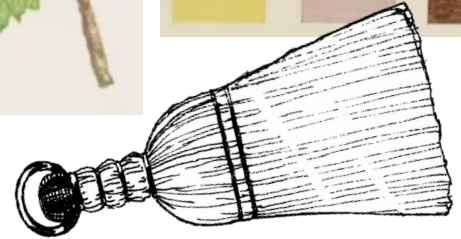
List all the material parts that make up the object. (For example, a paintbrush is made up of a painted wooden handle, a metal piece, and bristles.)

Where do each of the parts come from? (For example, the metal part of a paintbrush is brass, which is made by combining zinc and copper, which are mined from the Earth’s crust.)

Making Paint and Tools with Nature

In small groups of 2-4 people:

1. Respectfully **forage** pigment materials from campus, considering the principles of the [Honorable Harvest](#).
2. Follow the steps to [make paint](#)!
3. Test your paints, creating **swatches** and labeling with the natural material and binding agent. Create at least **3 different paints**.
4. Using foraged materials, create at least **2 brushes/tools** for applying paint.



Being Mindful of Cultural Appropriation

What is it?

the adoption or use of elements of one culture by members of another, often a dominant culture, in a way that is perceived as inappropriate or unacknowledged

Why is it harmful?

- potentially reinforces power imbalances and stereotypes
- exploits Native culture for non-Native monetary gain



Paiute Woman by [Kenneth Keys](#) (Elder, Sherwood Valley Band of Pomo Indians)

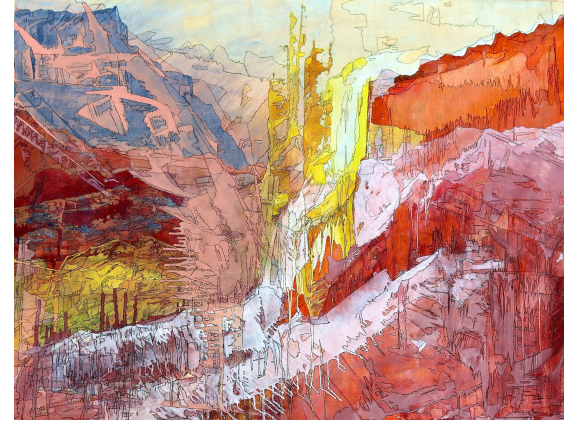
Collaborating with Nature in groups of 2-4 people

Create an artwork with your group.

You may only use natural materials (natural paints and painting tools created with foraged materials) to create the work.

Your group can choose to improvise or come up with a detailed plan. Consider how you might dilute the paint for washes or layer the thicker paint with marks created by your natural brushes.

The artwork **design should be inspired by nature**, with careful avoidance of appropriating Native aesthetics or imagery.



Paintings by [Camas Logue](#)
(Klamath, Modoc, and Northern Paiute)

Respecting Indigenous Peoples

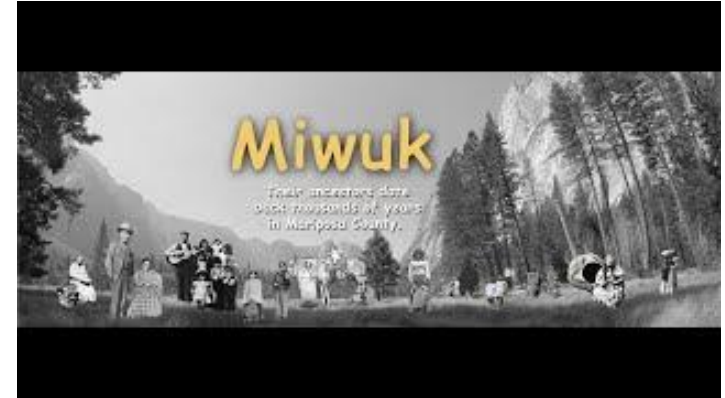
- **Acknowledge the history** of California Native peoples in the context of the Spanish Mission system, Gold Rush, and Indian Boarding Schools.
- Understand that **California Natives are still here** and continue to practice their traditions and languages in the present day. These traditions are **diverse** among the unique Indian groups of California.
- **Avoid cultural appropriation** that reinforces stereotypes (i.e. costumes) or uses Native designs to make a profit.



Dream House, [Rose B. Simpson](#) (Pueblo)

Respecting Indigenous Peoples

- **Buy Native art from Native people.**
Do not buy “Native-inspired” art from non-Native people.
- **Learn more about the local Me-Wuk tribal bands** of Tuolumne Rancheria and Chicken Ranch Rancheria.
- **Support local Native businesses and events**, such as the annual Acorn Festival put on by the Tuolumne Band of Me-Wuk Indians.



References and Resources

California indian pre-contact tribal territories. NCIDC. (n.d.).

[https://ncidc.org/California Indian Pre-Contact Tribal Territories](https://ncidc.org/California%20Indian%20Pre-Contact%20Tribal%20Territories)

Camas Logue. (n.d.). <https://www.camaslogue.com/>

Campbell, P. D. (2007). *Earth pigments and paint of the california Indians: Meaning and technology.* Paul Douglas Campbell.

Chicken Ranch Rancheria Me-Wuk Indians of California. (n.d.).

<https://chickenranchrancheria.org/>

Earth sky and everything in between. Middletown Art Center. (n.d.).

<https://middletownartcenter.org/earth-sky-and-everything-in-between.html>

Environmental Protection Agency. (n.d.). *California tribal lands and reservations.*

EPA. https://www3.epa.gov/region9/air/maps/ca_tribe.html

References and Resources

The Kenneth Keys gallery. Daily Paintworks. (n.d.).

<https://www.dailypaintworks.com/artists/kenneth-keys-11282/bio>

Kimmerer, R. W., & Gray Smith, M. (2022). *Braiding Sweetgrass for Young Adults: Indigenous wisdom, scientific knowledge, and the teachings of plants.* Lerner Publishing Group.

Native advocacy: Redbud resource group. Redbud. (n.d.).

<https://www.redbudresourcegroup.org/>

Pigments revealed international: Natural pigments. PigmentsRevealed. (n.d.).

<https://www.pigmentsrevealed.com/>

Tuolumne Me-Wuk Tribal Council. The Tuolumne Band of Me-Wuk Indians. (n.d.).

<https://mewuk.com/>

Wilder, E. (n.d.). *Eric Wilder graphics.* <http://www.ericwildergraphics.com/>