

What is a  
**Curator?**



# Oakland Museum of California

(Oakland, CA)



# National Building Museum

(Washington, DC)



# Victoria Art Gallery

(Bath, Somerset, England)

A curator  
**selects, organizes,  
and looks after**  
the objects or works of art  
in a museum or art gallery.

Your task:

Curate a group of artworks  
connected by a theme.

# Collection Requirements:

- 7-10 artworks
- From any genre or time period
- Connected by a theme

# Project:

- Create mini exhibition on posterboard
- Visual aesthetic representing your theme
- Exhibition title, artwork labels, curator's statement

# Step 1: Establish a Theme

- research theme of personal interest
- Search online database  
<http://www.wikiart.org>
- Browse Castle's art decks

## Types of Themes

- Idea or Concept
- Narrative
- Metaphor or Symbol
- Emotion
- Tribute
- Time Period
- Social Issue

# Step 2: Select Artworks

- 7-10 artworks total
- Record artist names and artwork titles for each piece
- If possible, include artwork dates and materials
- Compile artwork images on a Google Doc. Each artwork image should be no larger than  $\frac{1}{4}$  of the page. Share your Google Doc with Castle ([scastle@summbears.net](mailto:scastle@summbears.net)) and she will print your images in color.

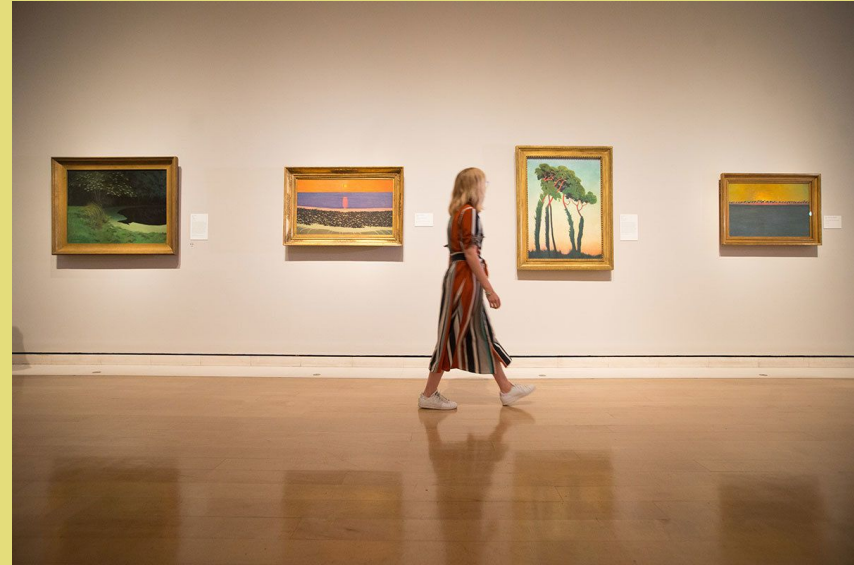
# Step 3: Installation Design

- Cut out artwork images and experiment with arrangement
- How do you want them to be presented?
- In what order?
- What should the color of the wall be?
- What should their frames look like?



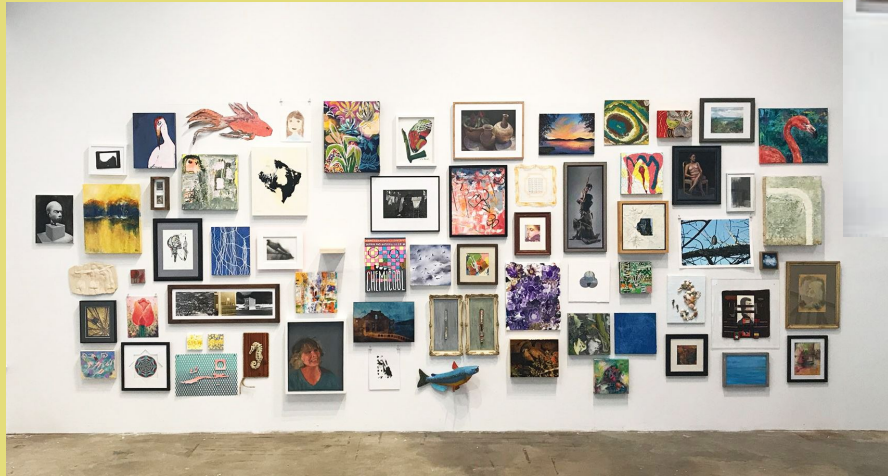
# Installation Design Option 2: Linear

Shows the order of artworks in a single line



# Installation Design Option 3: Salon Style

Shows an arrangement  
of artworks  
on a single wall



# Step 4: Creating your Mini-Exhibition

- Exhibit Title (in a stylized font)
- Artwork prints with borders or frames
- Artwork labels (artist name, artwork title)
- Background (pattern, texture, or solid color)
- Curator's Statement - at least 1 sentence explaining what the exhibit is about

# Step 5: Presentation (in small groups - next Thursday!)

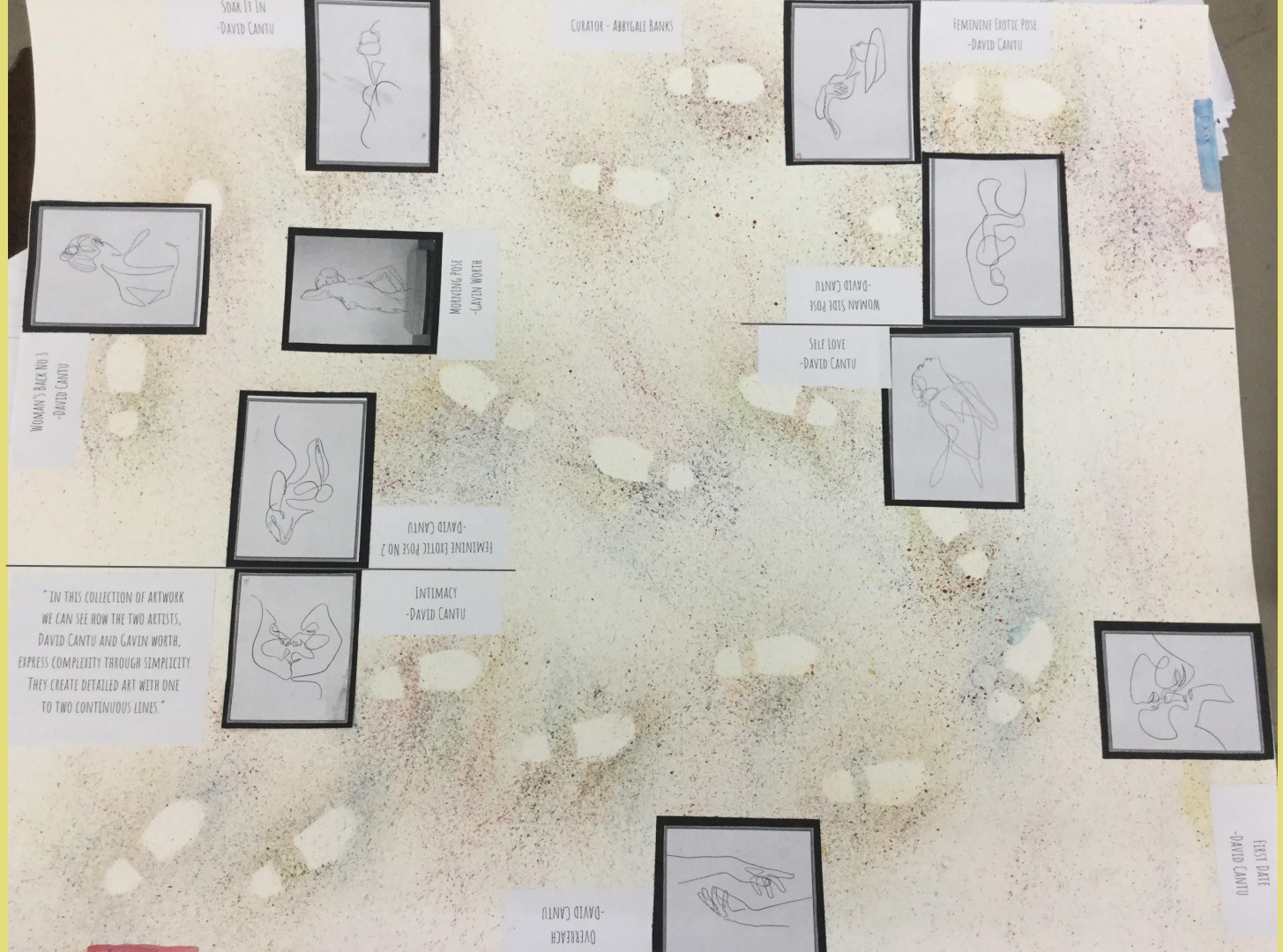
# Scoring Rubric

<b>Category:</b>	<b>3</b> Does Not Meet Expectations	<b>4</b> Meets Expectations	<b>5</b> Exceeds Expectations
Theme	-artwork selection is incomplete or random	-artwork selection is appropriate	-artwork selection reveals a cohesive, thoughtful theme
Design	-no evidence of planning before creating the finished product	-clean, thoughtful design	-creative and original -obvious connection between design and theme
Aesthetics and Presentation	-low amount of detail, appears rushed -wrinkles and tears	-detailed, complete project -labels contain errors or are not complete	-extreme detail -appropriate labels -no wrinkles or tears

# Student Work

## Map Layout Design-

Abby added footsteps to show the viewer's progression through the gallery!

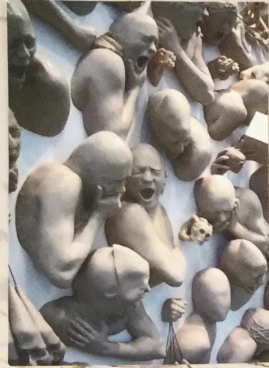


# Student Work

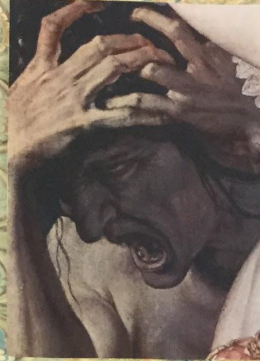
## Salon Style Design-

Heather used collage to create frames for the artwork.

IN THIS EXHIBIT YOU WILL BE INTRODUCED TO MANY PIECES, ALL OF WHICH DEMONSTRATE SOME INTERPRETATION OF HUMAN NATURE AND HUMAN SUFFERING. EACH PIECE MANAGES TO CONVEY A VERY DEEP AND PERSONAL EMOTION, ONE WHICH RELATES TO HUMAN NATURE IN ITS PUREST FORM.



UNTITLED - BY: LUDS RICO



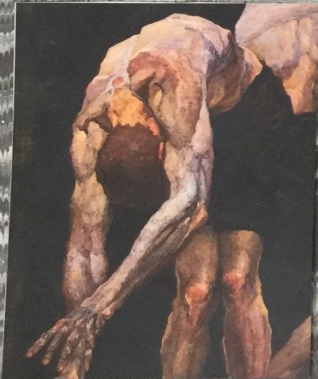
PIERRE - BY: JEAN MAUREL



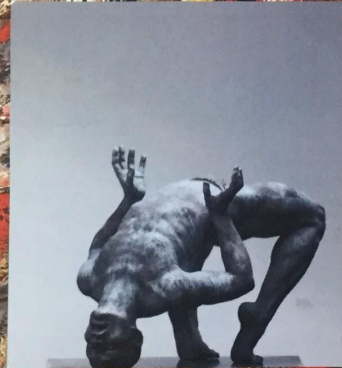
UNTITLED - BY: EMELIO VALLALBA



LE GÉNESE DU MAL - BY: GUILLAUME CHERE



UNTITLED - BY: DEVES SARAZHEN



REVUE - BY: LOMBARDE LAMBERTO



MEDUSA - BY: BERNINI

# Student Work

## 3D model-

Desiree used cardboard and popsicle sticks to create a model. The aesthetics of the mini-exhibition fit the theme of the artworks.

