

Manzanita Series

Sarah Castle
AOEU:Drawing
Week 8 Assignment
Teacher Showcase Series



INSPIRATION / goals

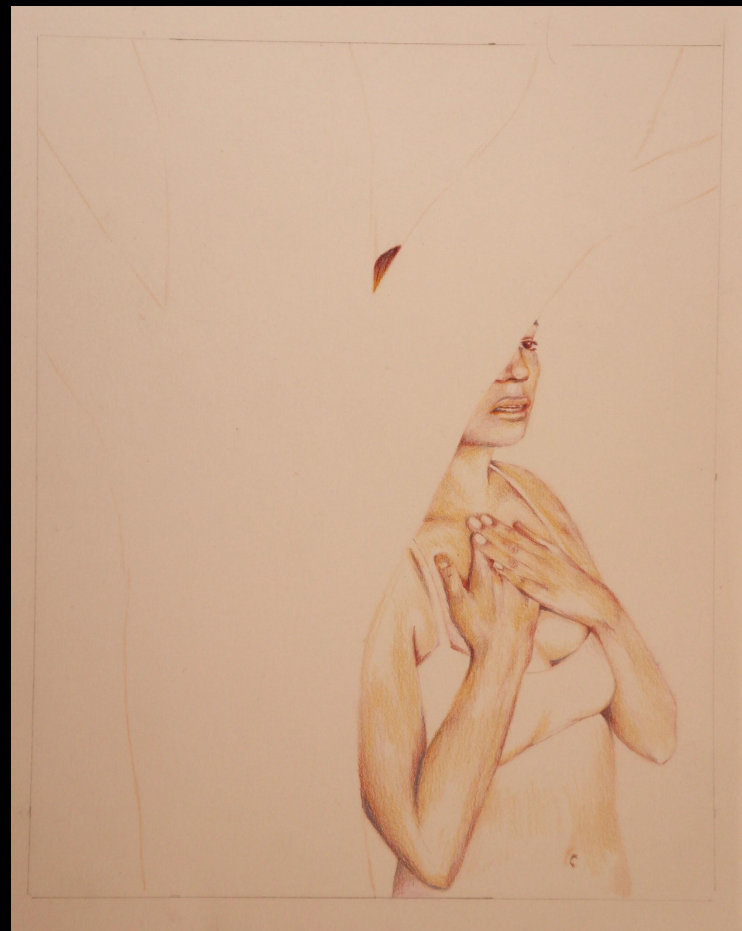
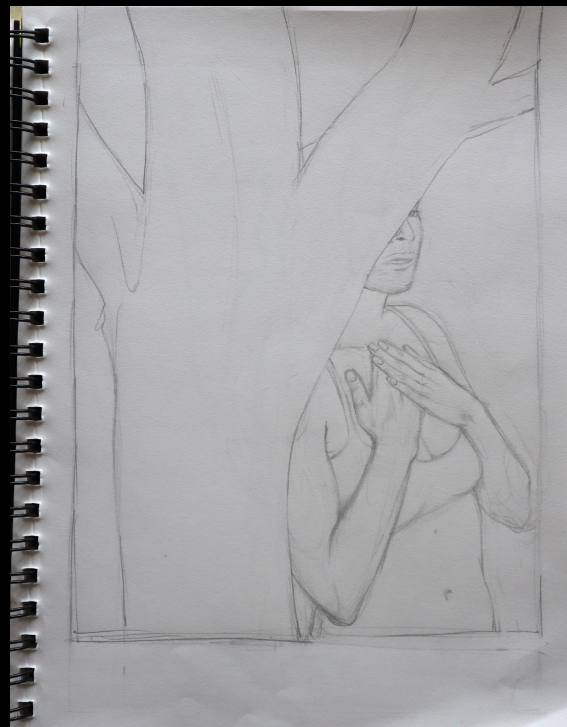
- utilize my revived passion for colored pencil and my developing skills with figure drawing
- use reference imagery collected over the summer of manzanita branches
- depict a sense of unity and connection between personal growth and the peeling manzanita tree

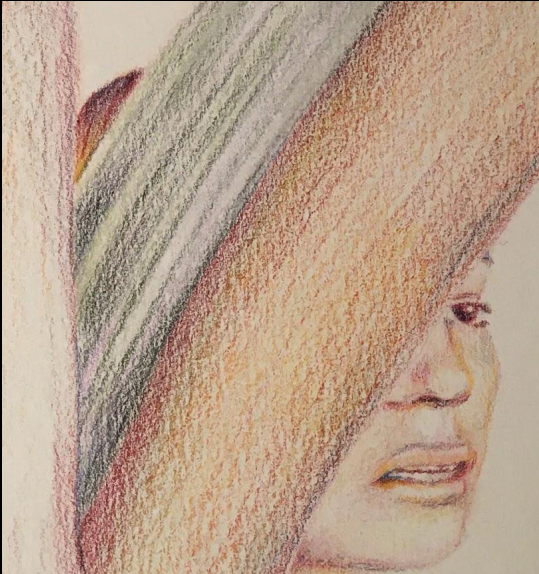
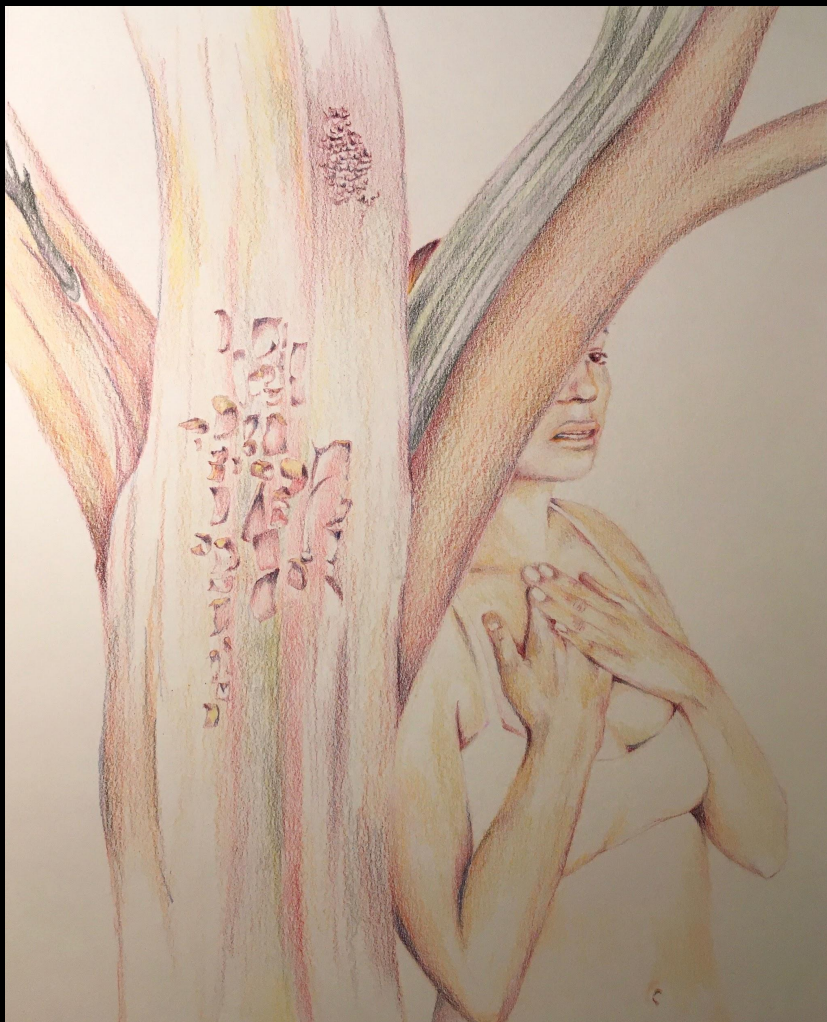


process, “Open”

I began each piece by using reference imagery to create a contour sketch of the composition. Once I decided on the design, I used a light table to trace it onto bristol board using a light, neutral colored pencil.

Continuing with colored pencil, I drew the figure before moving on to the manzanita branches.





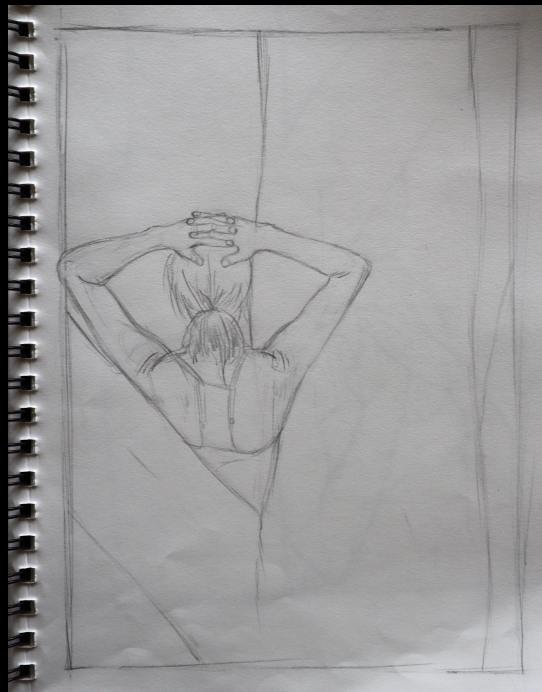
Open
8 x 10"
Colored pencils

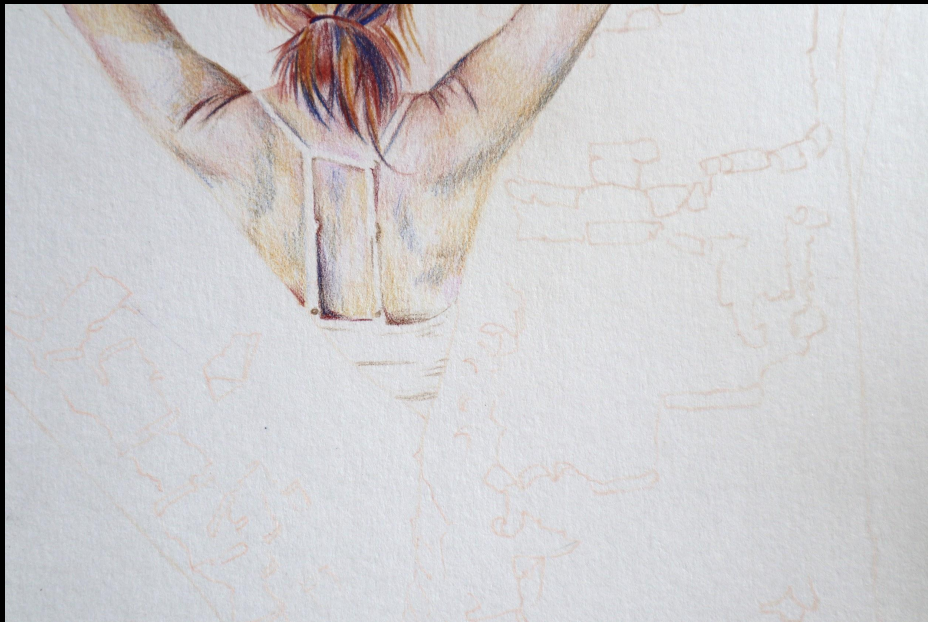


process, “Enough”

I began each piece by using reference imagery to create a contour sketch of the composition. Once I decided on the design, I used a light table to trace it onto bristol board using a light, neutral colored pencil.

Continuing with colored pencil, I drew the figure before moving on to the manzanita branches.

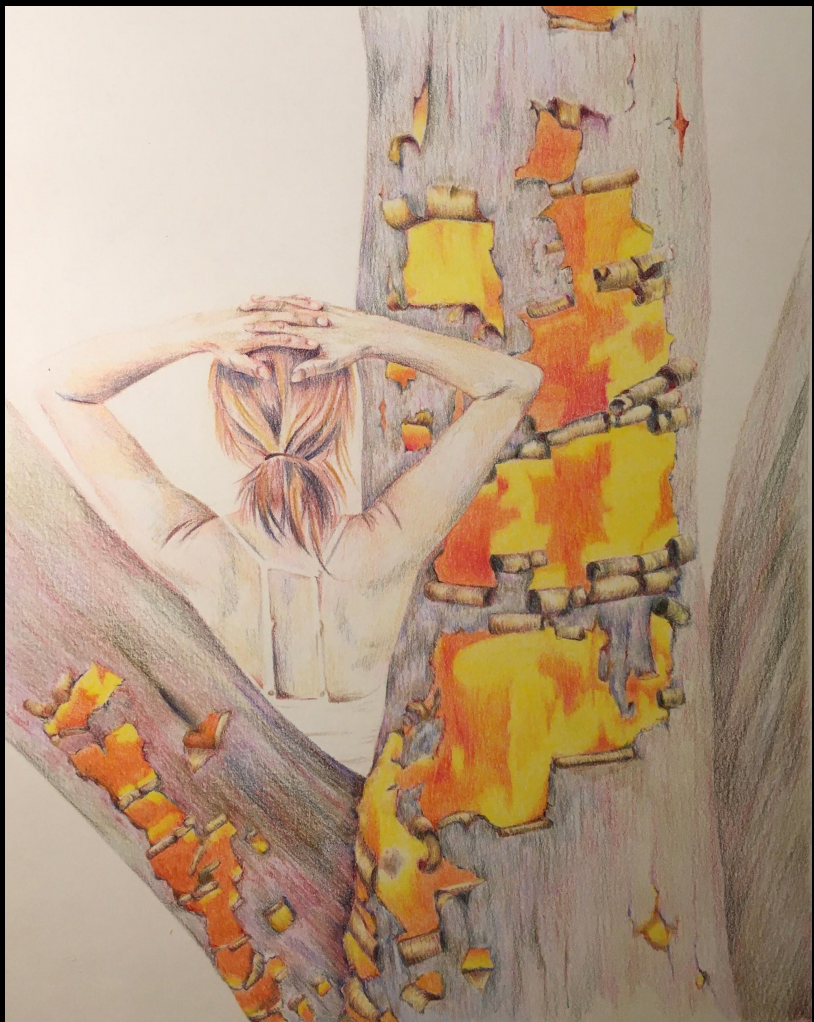




process, “Enough”

For the areas where the bark of the manzanita is peeling, I drafted the shapes in a light peach color. Then, I focused on the exposed new bark, using yellow, orange, red, and a colorless Prismacolor blender pencil to burnish.





Enough

8 x 10"

Colored pencils



process, “Together”

I began each piece by using reference imagery to create a contour sketch of the composition. Once I decided on the design, I used a light table to trace it onto bristol board using a light, neutral colored pencil.

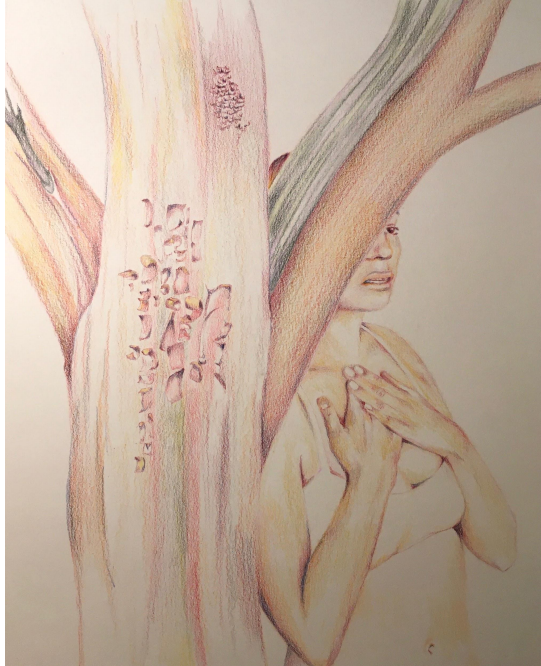
Continuing with colored pencil, I drew the figure before moving on to the manzanita branches.



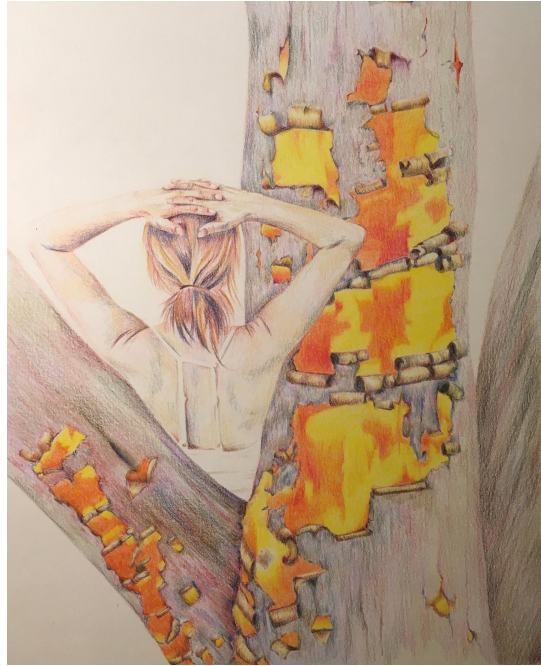


Together
8 x 10"
Colored pencils

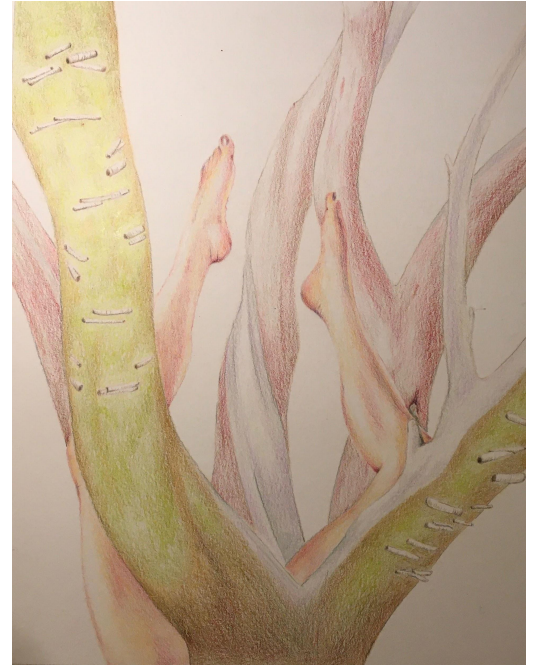




Open



Enough



Together

Manzanita is a series of three drawings rendered in colored pencil on vellum Bristol paper.

The drawings were inspired by the transformation of manzanita branches that occurs each summer. Dusty, dry bark curls up and flakes away to reveal luminous shades of yellow, green, and orange. This new bark continues to shift in color and eventually settles into the glossy, maroon branches of late fall. These drawings aim to depict this annual transformation of the manzanita alongside the human form, suggesting a metaphor for personal growth in loss and healing.

Each piece features a manzanita tree at a different stage of shedding. The peeling branches are paired with a portrait covering the figure only partially. The range of poses suggest a sense of introspection, acceptance, and playfulness.