



# SCULPTURE

lesson 1: introduction to 3D art

sculpture by Jennifer Maestre

# SCULPTURE

what do we already know?



Before looking ahead in this slideshow, consider your pre-existing knowledge about sculpture.

Add anything you already know to the Jamboard. (Jamboard link is on Google Classroom.)

# SCULPTURE lesson 1 overview

## introduction to 3D art

- What is Sculpture?
- 3D Design
- Sculptural Processes

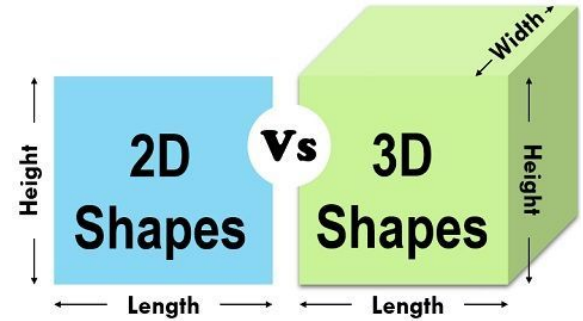
## lesson 1 sketchnotes

Create a page of sketchnotes documenting your learning.  
Throughout the slideshow, **important concepts are highlighted.**  
Be sure to address highlighted concepts in your sketchnotes.

# what is sculpture?

A simple definition:

**Sculpture is human-made three-dimensional art.**



Because sculpture is three-dimensional, the artist and the viewer can move around the artwork and view it from multiple perspectives.

This significantly changes the experience of creating and viewing the artwork.



Jonathan Levine



Jean Arp

# 3D design

How do the art elements and design principles **translate to 3D design?**

## art elements

**LINE**

**SHAPE**

**VALUE**

**COLOR**

**SPACE**

**TEXTURE**

**FORM**



Jeff Koons

## design principles

**CONTRAST**

**EMPHASIS**

**PATTERN**

**BALANCE**

**PROPORTION**

**HARMONY**

**MOVEMENT**

# sculptural processes

## subtractive

In **subtractive sculpture**, a material is removed or carved away to reveal a sculptural form.



## additive

In **additive sculpture**, a material is added together to build and create a sculptural form.



# sculptural processes

## subtractive

**Stone and wood carving** are some of the most ancient and well preserved forms of human art.



*David (1500), Michelangelo carved stone (marble)*



*11th century Chinese Bodhisattva carved wood*



# sculptural processes

**Additive sculpture** includes a vast range of materials and processes. The next couple of slides show a few categories.

## clay modeling (additive)

Wet **clay** can be pressed and manipulated using hands and tools. Depending on the type of clay, the sculpture is hardened through air-drying or firing in a kiln.



Whitney Jones

# sculptural processes

## construction (additive)

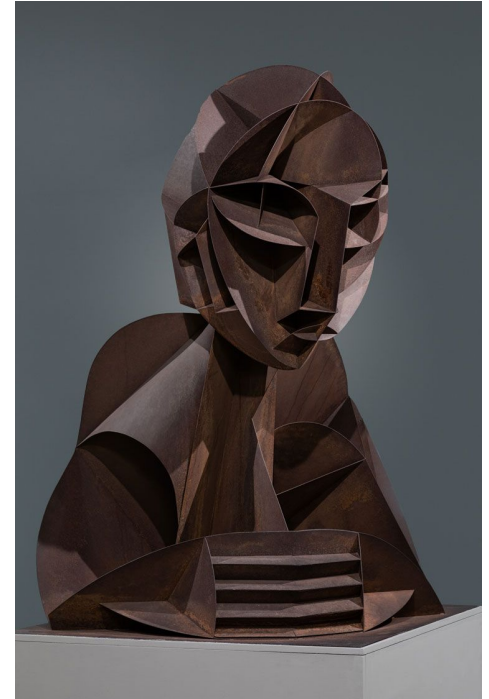
In **construction**, the parts of a sculpture are attached by using joints, adhesives, welds, and more.



Deborah Butterfield  
driftwood



Warren King  
cardboard

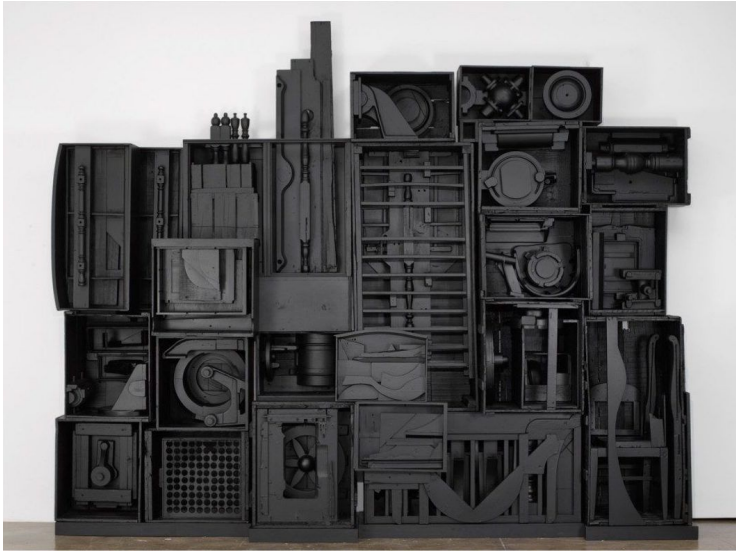


Naum Gabo  
sheet metal

# sculptural processes

## assemblage (additive)

**Assemblage** sculpture uses a collection of everyday objects found by the artist.



Louise Nevelson



Kirkland Smith

# sculptural processes

## mold making and casting

A **cast** is a **copy** of a pre-existing sculpture created by pouring **casting material** into a preformed **mold**.



Plaster Casting



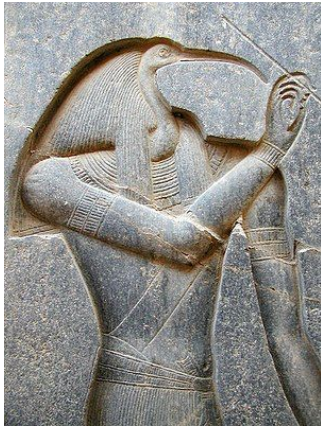
Lost Wax Method (Bronze Sculpture)

# sculptural processes

## relief

A **relief sculpture** that is **partially carved** into or out of another surface.

Relief sculptures rely on a **base or plane** to support them and are a combination of both three dimensional and two dimensional art forms.



Egyptian relief, 1400 BC



Elisa Mearelli



Jeff Nishinaka (paper)

# SCULPTURE

## introduction to 3D art

### review

- Sculpture is **human-made 3-dimensional** art.
- 3D design requires **special considerations for space, texture, form, balance, proportion, and movement.**
- **Subtractive** Processes: stone and wood **carving**
- **Additive** Processes: **modeling, construction, assemblage**
- Mold making and **casting**
- **Relief** sculpture

# up next...



SCULPTURE  
MODULE:

*Construction!*

